

**安全注意事项** 为了确保最好的性能,请仔细阅读本说明书,并妥善保管以备日后查阅。

## 警告

---

- 请将本音响系统安装在通风良好、阴凉、干燥、干净的位置- 远离直射阳光、热源、振动、灰尘、潮湿和/ 或寒冷。
- 不要将本机从温度反差大的寒冷地方突然搬到温热地方,也不要将本机放置在非常潮湿的环境里(例如放置有加湿器的房间),以免本机内部结露。因为结露可能导致触电、火灾而损坏本机和/ 或造成人身伤害。
- 避免将本机安装在异物容易掉落的地方,也要避免那些液体容易滴入或飞溅到的地方。本机的上面,请不要放置下列物品:
  - 其他装置。因为这样有可能会造成损坏和/ 或导致本机表面变色。
  - 可燃物品(例如蜡烛)。因为这样有可能导致火灾而损坏本机和/ 或造成人身伤害。
  - 装有液体的容器。因为有容器反倒,液体流淌的可能,如此有可能导致用户触电和/ 或损坏本机。
- 不要在本机上面覆盖报纸、台布、窗帘等,以免妨碍散热。如果本机内部温度过高,则有可能导致火灾,损坏本机和/ 或造成人身伤害。
- 在使用开关、旋钮和/ 或缆线时,不要用力过猛。
- 当从墙壁电源插座上断开电源线的连接时,请抓住交流电源插头;而不要拉拽电线。
- 不要使用化学溶剂清洗本机,否则会损伤表面涂层。请使用干净的布匹。
- 只能使用本机指定的电压。使用高于指定数值的电压很危险,而且可能导致火灾,损坏本机,和/ 或造成人身伤害。对于使用高于指定电压造成的任何损害,双木三林将不负任何责任。
- 不要试图自行改造或修理本机。如果需要任何服务,请就近与有资格的双木三林维修人员联系。不管有任何理由,都没有打开机壳的必要。
- 如果打算长时间不使用本机(比如度假时),请从墙壁交流电源插座上断开电源线的连接。
- 搬动本机前,请从墙壁电源插座上断开电源线的连接。
- 请务必使用本机附带的AC 适配器。使用附带的AC 适配器以外的适配器可能导致火灾或损害本机。
- 将本机安装在墙壁电源插座附近和容易连接电源线的地方。
- 为了加强对于本产品的保护,在雷电期间,或无人管理时以及长时间不使用时,请将电源线从墙壁上的电源插座上拔下。这样将防止该产品在闪电和电网出现电涌时受到损害。

## 特点

采样率PCM支持到768kHz,DSD512硬解

支持原生DSD解码

DAC采用两片AK4490,HIFI保真加全平衡

输出部分采用2个Texas Instruments公司生产的高级耳机放大器IC TPA6120A2

内置异步升频功能,消除数字接收的时钟抖动

设计有2.5mm平衡输出,方便接平衡耳机,可以通过转接线接四芯卡侬平衡耳机

音频部分使用2颗超低相噪的晶振

高精度CNC全铝合金外壳

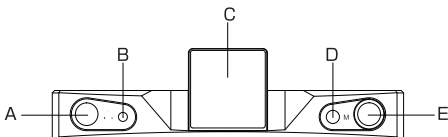
# 技术参数

- 输入方式: USB/光纤/同轴
- THD+N: RCA out 0.0004%  
耳放 0.001%
- 动态范围: RCA out 115dB
- 信噪比: RCA out 110dB  
耳放 105dB
  
- USB传输方式: 异步传输
- USB兼容性: Windows XP/7/8/8.1/10  
Mac OSX10.6以上
- 位深: USB 16bit-32bit, 1 bit  
光纤,同轴 16bit-24bit
- 采样率: USB PCM 44.1kHz-768kHz  
USB DSD 2.8224MHz,5.6448MHz  
11.2896MHz,22.5792MHz  
光纤,同轴 44.1kHz-192kHz

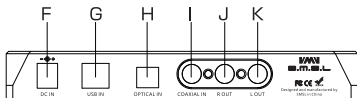
## 技术参数

- 耳放输出功率(@THD=0.1%): 平衡输出
  - 32欧 108mW
  - 64欧 104mW
  - 150欧 86mW
  - 300欧 57mW
- 非平衡输出
  - 32欧 56mW
  - 64欧 45mW
  - 150欧 28mW
  - 300欧 16mW
- RCA接口输出电平: 2Vrms
- 消耗功率: 5W
- 待机功率: 0.1W

## 部件介绍

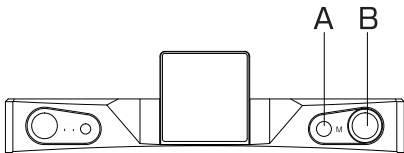


- A. 3.5mm非平衡耳机口      D. 开关键/自定义功能键  
B. 2.5mm平衡耳机口      E. 旋钮键  
C. 显示屏



- F. 电源输入      I. 同轴输入  
G. USB输入      J. 线路输出右声道  
H. 光纤输入      K. 线路输出左声道

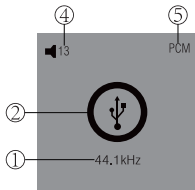
## 操作说明





- A. 开关键, 长按为开机, 短按为自定义功能键  
B. 功能键, 旋钮旋转为音量控制及功能切换, 旋钮短按为菜单先择, 长按为返回主界面

# 播放界面介绍

初次使用机器,长按功能键,开启设备进入播放界面(图1)



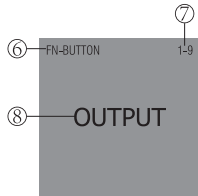
- 1:显示采样率
- 2:显示输入源
- 3:此处显示RCA输出模式和耳机输出模式,当使用前置耳机口显示 ,用RCA输出时显示 
- 4:音量大小显示
- 5:显示音频格式

播放普通数字音频是显示PCM,播放DSD时显示DSD

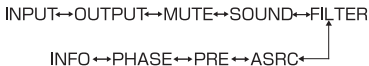
# 主菜单介绍

短按菜单键进入M9菜单选项

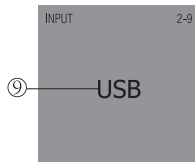
自定义功能菜单(图2)



- 6:菜单功能显示,当前菜单显示为自定义功能
- 7:设备共有九个菜单,当前表示菜单 1
- 8:自定义功能键可以自定义九种功能,分别为输入选择,输出选择,静音,音色模式,滤波方式,升频,前级功能打开与关闭,输出相位设置,本机当前工作状态显示



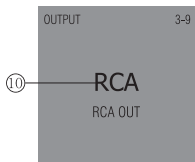
输入方式菜单(图3)



- 9:当前显示USB输入方式,顺时针旋转功能键进行输入方式的切换,设备共有三种输入方式



## 输出方式菜单(图4)



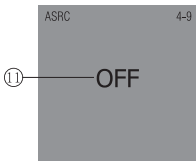
10:设备共有三种输出方式,分别是RCA输出,2.5mm平衡输出,6.35mm非平衡输出

RCA ← → HP-B ← → HP-UB

注:HP-B为2.5mm平衡耳机输出

HP-UB为6.35mm非平衡输出

## 升频选择菜单(图5)



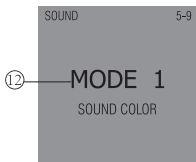
11:设备共有六种升频方式,当前播放的音频采样率高于192kHz,将关闭升频

┌──→44.1──→88.2──→176.2  
OFF  
└──→48──→96──→192

注:当输入采样率为44.1kHz的倍数时,只能按44.1kHz的倍数升频!

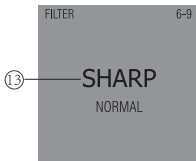
当输入采样率为48kHz倍数时,只能按48kHz的倍数升频!

## 音色模式(图6)

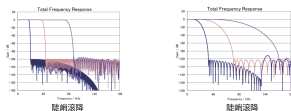


12:AK4490内置了3种不同的音色模式,3种模式的音色上会略微区别

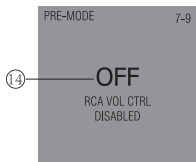
## 滤波方式(图7)



13:本机总共有4种数字滤波方式,它的作用是用数字运算的方式把音频外的杂波过滤掉,分别为:  
Sharp roll-off(陡峭滚降)/Short delay sharp roll-off(短延时陡峭滚降)  
Slow roll-off(缓慢滚降)/Short delay slow roll-off(短延时缓慢滚降)  
具体的滤波图如图:

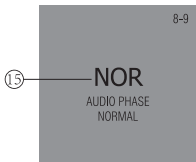


## 前级功能菜单(图8)



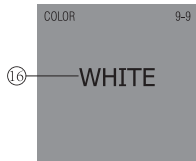
- 14:本功能为RCA输出接口的音量调节功能的开关:  
ON时,RCA输出端子的音量是受控的  
OFF时,RCA输出端子音量是固定的

## 相位调节菜单(图9)



- 15:这个功能可以让用户设置所有输出接口的相位  
NOR为正常模式  
INV为反相模式

## 字体颜色菜单(图10)



- 16:设备字体共有6种颜色可供选择,旋转菜单按钮进行切换





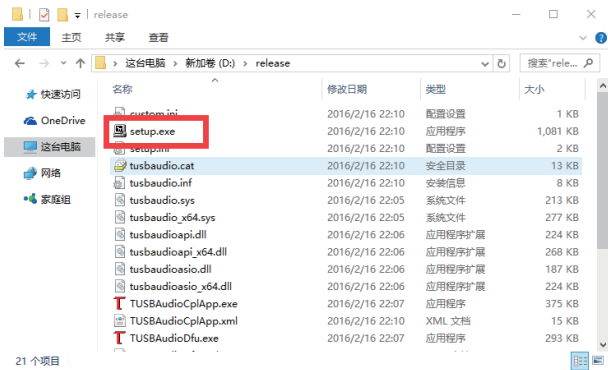
# M9 USB驱动安装

安装前必读:

- 下文仅供使用Windows 7/8/8.1/10用户!
- 使用Mac OS X的用户无需安装本驱动程序!

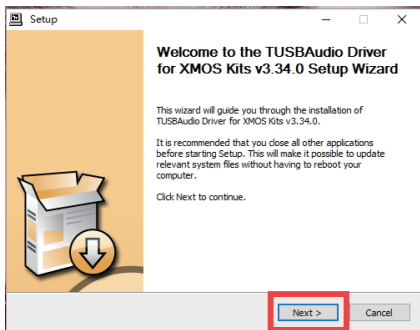
安装步骤

1. 打开驱动文件夹, 双击“setup.exe”应用程。

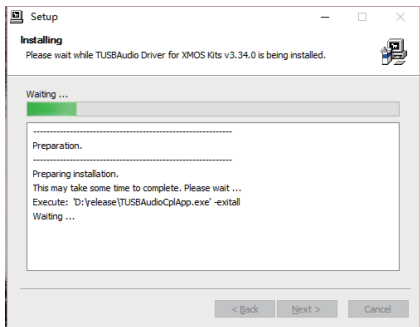


# M9 USB驱动安装

2. 点击“Next”进行下一步。

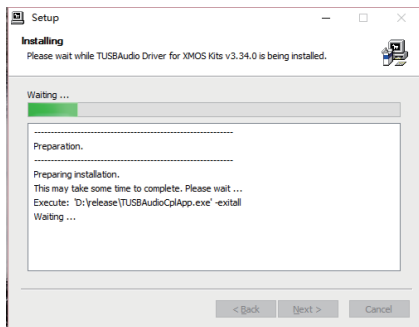


3. 保持默认安装目录, 点击“Install”进行安装。

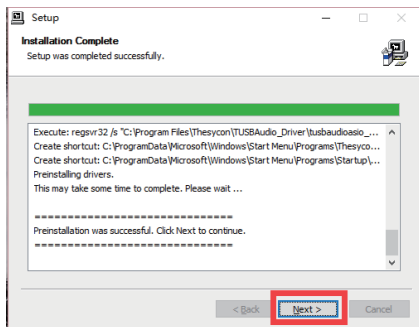


# M9 USB驱动安装

## 4.安装进行中。

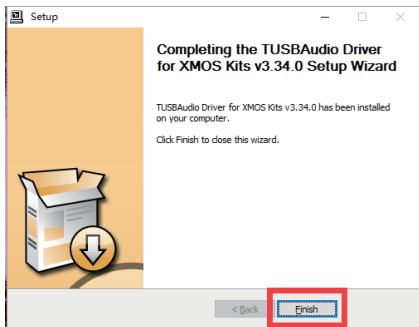


## 5.点击“Next”进行下一步。

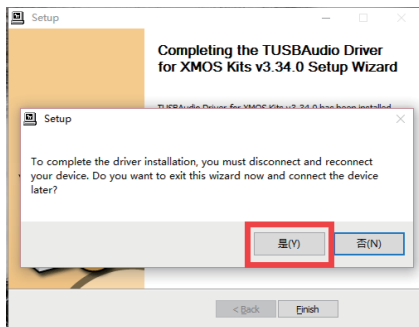


# M9 USB驱动安装

6.序安装完成,点击“Finish”。



7.安装完成点击是退出安装程序。



# M9 DSD格式播放说明

## 一.安装前必读:

- 本驱动为网络上共享资源, 版权归作者所有!
- 使用Foobar2000播放DSD格式文件需要用到下面两个插件, 这两个插件在光盘中有提供.



ASIO插件



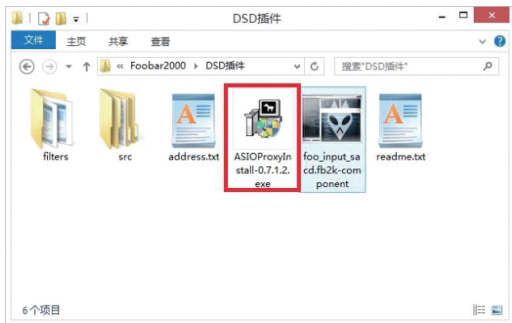
DSD插件

- 在安装完Foobar2000后, 插件方可以被识别为Foobar样式!
- 本文件只对应使用Windows XP/7/8/8.1/10的用户!
- 使用Mac OS X的用户无需安装本程序!

## 二.安装步骤:

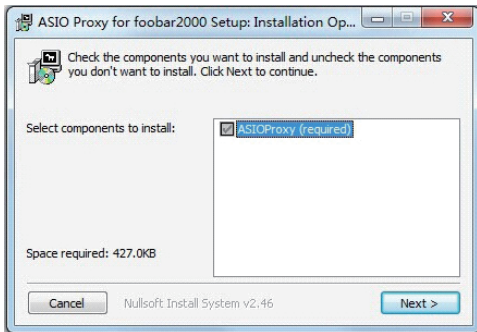
### 安装DSD插件

1. 在"DSD插件"文件夹中双击"ASIOProxyInstall-0.7.1.2.exe",打开安装.

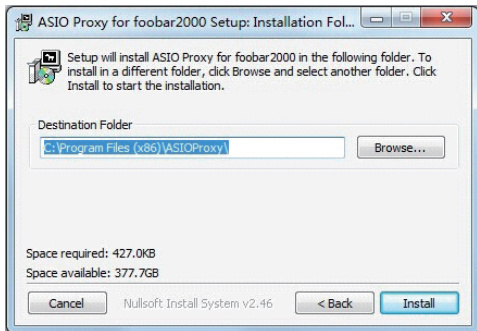


# M9 DSD格式播放说明

2.点击下图中的“Next”

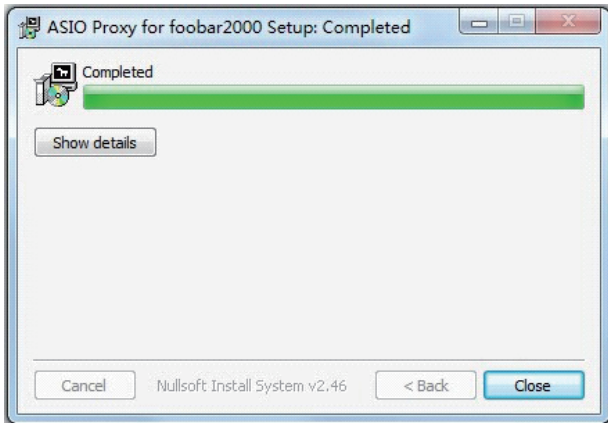


3.“Browse...”选择安装路径(使用默认),再选择“Install”



# M9 DSD格式播放说明

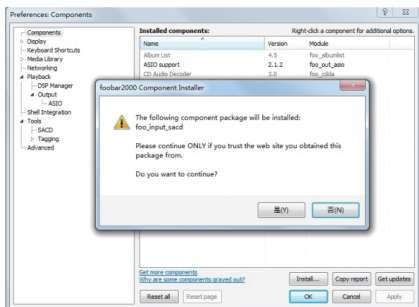
## 4.安装完成,选择“Close”



## 三,安装SACD插件:

在DSD插件文件夹中双击“foo\_input\_sacd.fb2k-component”→单击“OK”,另外,foo\_out\_asio.WASAPI等插件使用同样的安装方式,更多插件请到Foobar2000官网下载:<http://www.foobar2000.org/download>

# M9 DSD格式播放说明

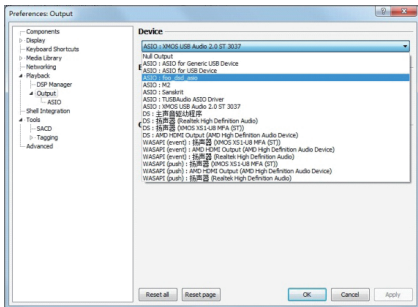


## 四.DSD播放设置:

### 注意:

播放时请将系统音量设置为最大,否则会影响DSD输出!

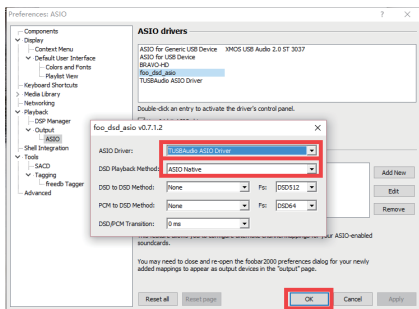
1.打开Foobar2000,找到"Files→Preference→Playback→Output→Device"设置为"ASIO : foo\_dsd\_asio"



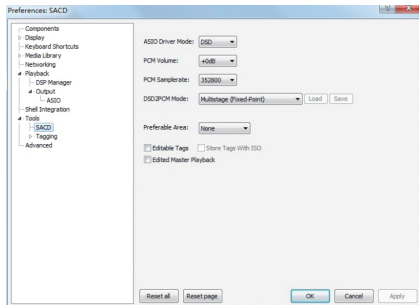


# M9 DSD格式播放说明

2.找到“Files→Preference→Playback→Output→ASIO→ASIO device” 双击“foo\_dsd\_asio”



3.在Files→Preference→Tools→SACD中将“ASIO Driver Mode”设置为“DSD”，其它设置按照下图。



# 恢复出厂设置

插入电源插头,按住开机键,直到显示LOGO之后,松开按键。

## 保修条款

### 一、服务期限

深圳市双木三林电子有限公司承诺产品的良好品质,产品自售出之日7天内正常使用情况下出现故障,客户可以选择退货或者保修(不影响二次销售才可以退货)。正常使用一年内出现故障可以免费保修。

二、购买日期以销售商开出的购机发票或收据日期为准,网购可以以交易截图为准。

三、有以下情况都不能享受“三包”服务

- (1).一切人为因素损坏,包括非正常工作环境下使用或不按照说明书使用;
- (2).用户私自拆机、改装、维修;
- (3).使用非指定或许可的配件造成损坏的;
- (4).机身的QC或保修贴损毁;
- (5).不能出示有效购机凭证;
- (6).不属于本公司产品;

四、保修方式为送修

此条款仅适用于中国大陆,其他地区请参考当地销售代理商的规定和国家法规。

# Safety Notes

To assure the finest performance, please read this manual carefully. Keep it in a safe place for future reference.

## Warning

---

- **Install** this unit in a well ventilated, cool, dry, clean place - away from direct sunlight, heat sources, vibration, dust, moisture, and/or cold.
- Do not expose this unit to sudden temperature changes from cold to hot, and do not locate this unit in an environment with high humidity (i.e. a room with a humidifier) to prevent condensation inside this unit, which may cause an electrical shock, fire, damage to this unit, and/ or personal injury.
- Avoid installing this unit where foreign objects may fall onto this unit and/or this unit may be exposed to liquid dripping or splashing. On the top of this unit, do NOT place:
  - Other components, as they may cause damage and/or discoloration on the surface of this unit.
  - Burning objects (i.e. candles), as they may cause fire, damage to this unit, and/ or personal injury.
  - Containers with liquid in them, as they may fall and liquid may cause electrical shock to the user and/or damage to this unit.
- Do not cover this unit with a newspaper, tablecloth, curtain, etc. in order not to obstruct heat radiation. If the temperature inside this unit rises, it may cause fire, damage to this unit, and/or personal injury.
- Do not use force on switches, knobs, and/or cords.
- When disconnecting the power cable from the wall outlet, grasp the AC plug; do not pull the cord.
- Do not clean this unit with chemical solvents; this might damage the finish. Use a clean, dry cloth.
- Only the voltage specified on this unit must be used. Using this unit with a higher voltage than specified is dangerous and may cause fire, damage to this unit, and/or personal injury. SMSL will not be held responsible for any damage resulting from use of this unit with a voltage other than that specified.
- Do not attempt to modify or fix this unit. Contact qualified SMSL service personnel when any service is needed. The cabinet should never be opened for any reason.
- When not planning to use this unit for long periods of time (i.e. when going on vacation), disconnect the power cable from the AC wall outlet.
- Before moving this unit, disconnect the power cable from the wall outlet.
- Be sure to use the AC adaptor supplied with this unit. Using an AC adaptor other than the one provided may cause fire or damage to this unit.
- **Install** this unit near the wall outlet and where the power cable can be reached easily. For added protection for this product during a lightning storm, or when it is left unattended and unused for long periods of time, unplug it from the wall outlet. This will prevent damage to the product due to lightning and power-line surges.

### Note

The plug severed from the mains lead must be destroyed, as a plug with bared flexible cord is hazardous if engaged in a live socket outlet.

## Features

Sampling rate PCM support up to 768kHz,  
DSD512 native decoding.

Support native DSD decoding.

Using AK4490 as DAC chip, high fidelity and  
full-balanced.

TPA6120A2\*2 as headphone output AMP  
chip which from Texas Instruments.

Built-in asynchronous sample rate converter  
function to eliminate DIR clock jitter.

2.5mm balanced output is convenient to plug  
with balanced earphone,also can plug with four  
pin XLR balanced headphone by switching cable.

Two pieces of ultra low phase noise CRYSTAL  
used as audio clock.

High-precision CNC 100% aluminum housing.

# Specifications

- Input source: USB/Optical/Coaxial
- THD+N: RCA out 0.0004%  
Headphone AMP 0.001%
- Dynamic Range: 115dB  
SNR: RCA out 110dB  
Headphone AMP 105dB
- USB transmission mode: Asynchronous
- USB compatibility: Windows XP/7/8/8.1/10  
Mac OSX 10.6 above
- Bit Depth: USB 16bit-32bit, 1bit  
Optical, Coaxial 16bit-24bit
- Sampling rate: USB PCM 44.1kHz-768kHz  
USB DSD 2.8224MHz, 5.6448MHz  
11.2896MHz, 22.5792MHz  
Optical, Coaxial 44.1kHz-192kHz

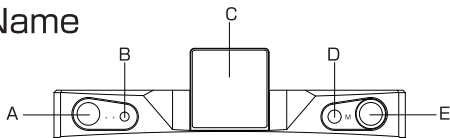
# Specifications

- Headphone output power(@THD=0.1%):

Balanced output	32 $\Omega$	108mW
	64 $\Omega$	104mW
	150 $\Omega$	86mW
	300 $\Omega$	57mW
Un-balanced output	32 $\Omega$	56mW
	64 $\Omega$	45mW
	150 $\Omega$	28mw
	300 $\Omega$	16mW

- RCA output level: 2Vrms
- Consumption power: 5W
- Standby power: 0.1W

## Parts Name



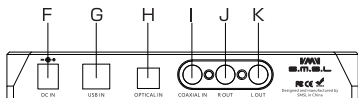
A.6.35mm unbalanced  
headphone jack

B.2.5mm balanced  
headphone jack

C.Screen

D.ON/OFF KEY

E.Knob



F.Power input

G.USB input

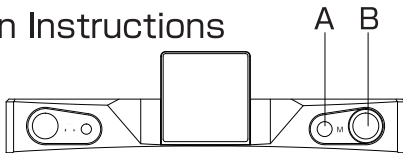
H.Optical input

I.Coaxial input

J.RCA R-Channel output

K.RCA L-channel output

## Operation Instructions



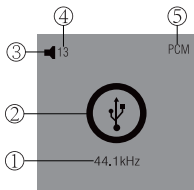
A:ON/OFF Key:Short-press is user-defined / Long-press is ON/OFF function.

B:This button's function can be set in the FN-BUTTON menu:Volume control and menu setting.

Knob / Push: Into MENU / Long Push: Return to desktop.

# Desktop Screen

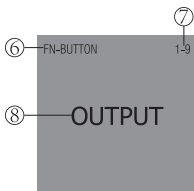
When this unit power on, the unit will go into "desktop" mode, as figure 1.



- 1.Sampling rate of input signal.
- 2.Input source icon, here can be USB/COAXIAL/OPTICAL.
- 3.Output Mode icon . When the output mode is headphone, it shows . When the output mode is RCA, it shows .
- 4.Volume
- 5 .Music format you are receiving. Here can be PCM or DSD.

## MENU SCREEN:

User-defined function menu(figure 2)

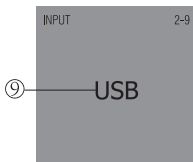


- 6.The name of this menu page. This page is FN-BUTTON
- 7.The page number and total page number.
- 8.This page is to set the function of the FN button(Short press the ON/OFF button):  
For example: set this page to info, and then press the ON/OFF button, the screen will shows the status of this unit.

INPUT↔OUTPUT↔MUTE↔SOUND↔FILTER  
INFO↔PHASE↔PRE↔ASRC↔



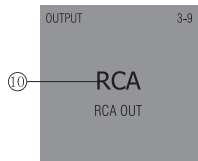
## Input mode Menu (Figure 3)



9.INPUT: To select the input source between coaxial, optical and USB. 3 input sources.

COAX ← → OPTI ← → USB

## Output mode Menu(Figure 4)



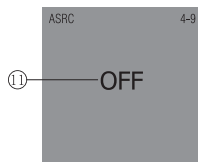
10.OUTPUT: To select the output port of audio signal. There is 3 kinds of output.

RCA ← → HP-B ← → HP-UB

Note: HP-B means the 2.5mm balanced headphone output.

HP-UB means the 6.35mm unbalanced headphone output.

## Upsampling selection menu(Figure 5)



11.ASRC: To select the internal sampling frequency go into the DAC, and the ASRC also can kill the jitter of DIR interface, it is very good for sound quality.

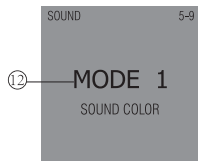
OFF ← → 44.1 ← → 88.2 ← → 176.2

Note: OFF ← → 48 ← → 96 ← → 192

1. The ASRC will auto bypass when input sampling frequency > 192kHz and DSD.

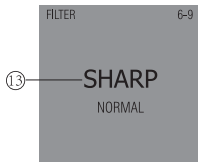
2. When input sampling frequency is multiple of 44.1kHz, it can only set to the multiple of 44.1kHz.

## Tone Mode(Figure 6)



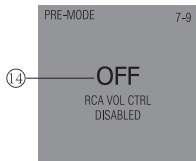
12.Sound: To select the mode of sound color which build-in the AK4490, Default is mode 1, there is a little difference between the 3 modes.

## Filter Mode( Figure 7)



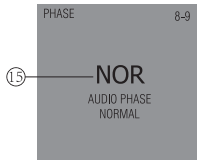
13.Filter: To select the digital filter mode of DAC. 4 kinds of filter modes.

## PRE FUNCTION MENU(figure 8)



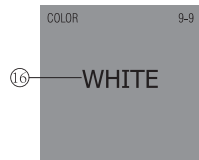
14.M9 featured with PRE function which can be on or off under this menu.

## Phase setting Menu(figure 9)



15.Output phase can be setted according to users requirements.

## Font color change(Figure 10)



16. There are six kind of color for selection. Easily changing color by revolving menu knob.



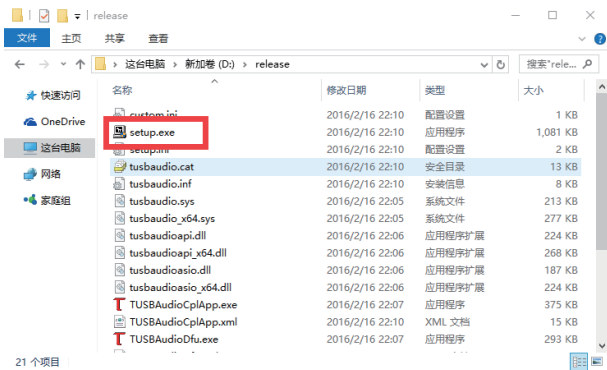
# M9 USB driver installation

Read before installation:

- Following file is suitable only for window 7/8/8.1/10 user.
- Max OS X user needn't to install this driver.

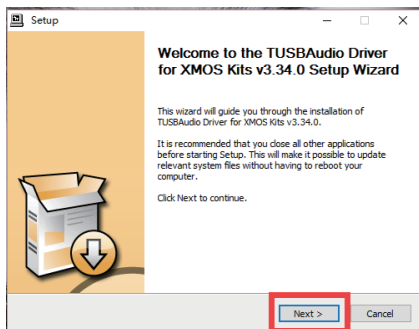
Installation steps.

1,Click driver folder,Double-click "setup.exe"

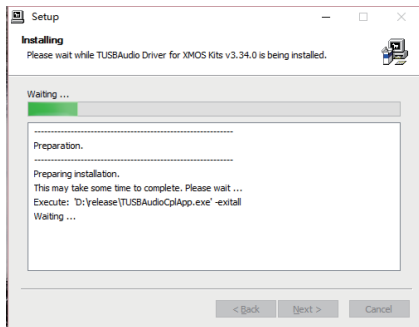


# M9 USB驱动安装

2. Click “next” into next step.

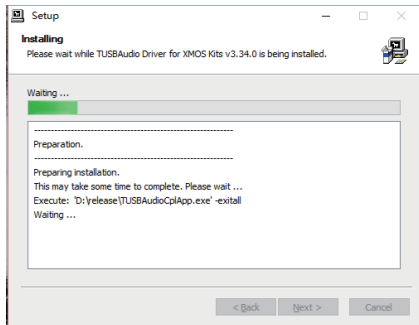


3. Keep default installation column and click “install”.

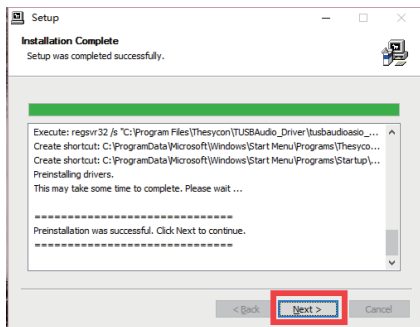


# M9 USB驱动安装

## 4.Installing.

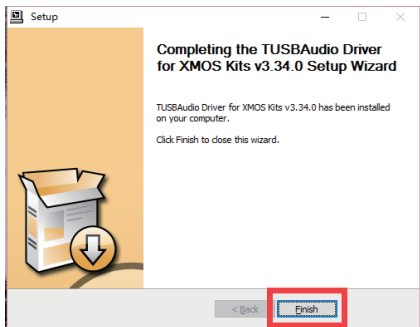


## 5.Click"Next"into next step.

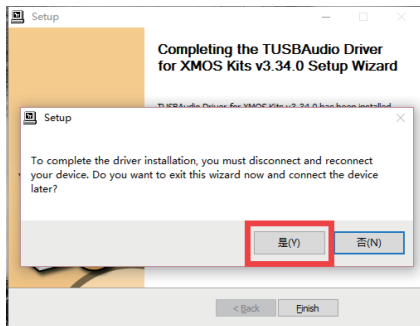


# M9 USB驱动安装

6.Installation finished, click “Finish”.



7.Select “Yes” after installation finished.



# M9 DSD Player

## 1.Installation instruction:

- This driver is network shareware, rights belong to owner!  
Using foobar2000 play DSD format files need following two plug-in. The two plug-in are provided in disk.

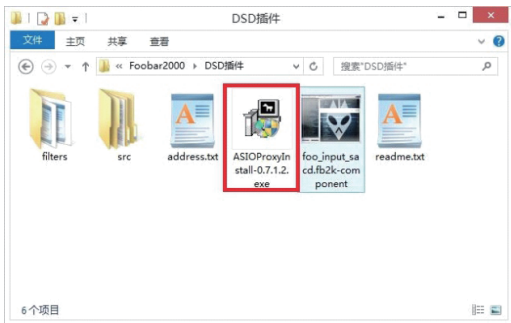


- After installing foobar2000, the icon of components will became foobar style.
- This instruction only suitable for windows XP/7/8/8.1/10 user.
- Mac OS X user needn't install this driver.

## 2.Installation steps:

### Install DSD plug-in

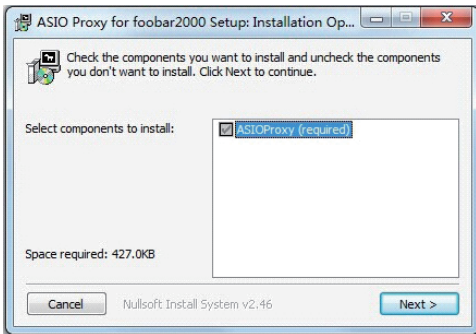
- 1.Double click "ASIOProxyInstall-0.7.1.2.exe" under "DSD plug-in" folder, and then install it.



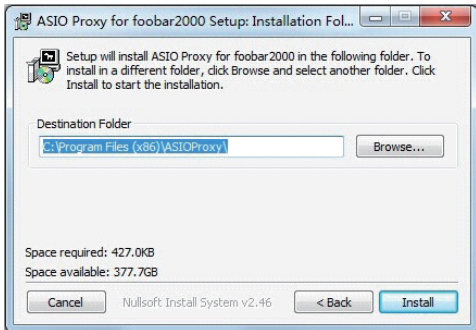
# M9 DSD Player

## 2.Installation steps:

2. Click "next"



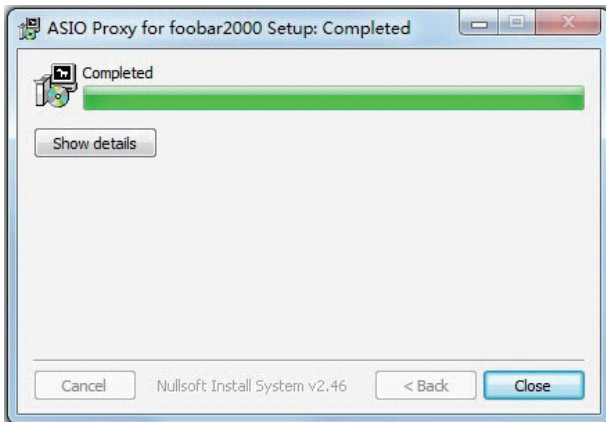
3.Select installation route(using default route), and click "Install"





# M9 DSD Player

4.Installation finished, choose "close".



## •Install SACD Plug-in

Double click "foo\_input\_sacd. fb2k-component" from DSD plug-in folder

→ single click "Y"

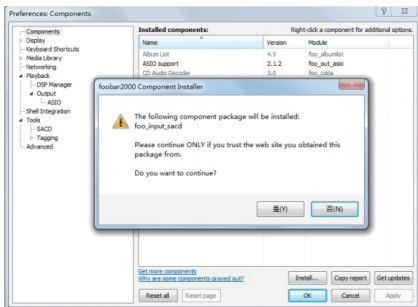
→ single click "N"

Other plug-ins like "foo\_out\_asio" "WASAP" can be installed by same way.

More plug-in download from foobar2000 official website:

<http://www.foobar2000.org/download>

# M9 DSD Player

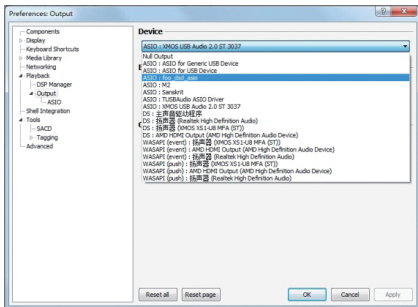


## 3.DSD playback settings:

### NOTE :

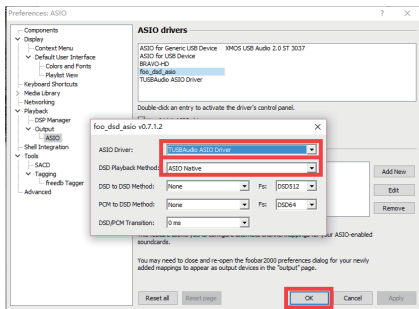
Please set the system volume to MAX when playing DSD Music.

1.Open Foobar2000, and find out "Files→Preference→Playback→Output→Device"  
Set as "ASIO: foo\_dsd\_asio"

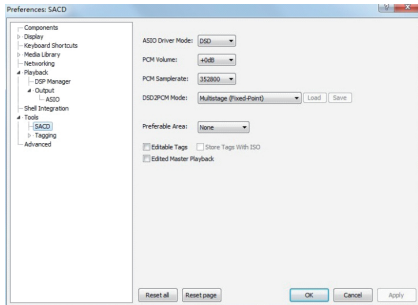


# M9 DSD Player

2. Find out "Flies→Preference→Output→ASIO→ASIO device"  
Double click "foo\_dsd\_asio"



3. Flies→Preference→Tools→SACD, Set DSD under "ASIO Driver Mode"  
other settings check below picture.



## Factory Reset:

Connect the DC cable while pressing “ ⏻ ” key of the M9 until screen shows LOGO.

## Warranty terms

### (1) The term of service

Shenzhen ShuangMuSanLin Electronics Co., LTD promise good quality products. If product is defective unit by normal use with in 7 days after purchasing. The customer can choose to return or repair warranty ( does not affect the secondary sales after they can return).

Faulty for free with in one year warranty normal use.

(2) Date of purchase is in accordance with invoice date or receipt date issued by seller, online shopping can cut trade shots.

(3) Following situation can not enjoy “Three Guarantees” service”

- a. All damages by human factors, including use it under nonnormal working environment the and not following manual instruction.
- b. User privately disassemble, modification, maintenance.
- c. Use non-designated or approved accessories cause damage.
- d. QC or warranty stickers damage on cabinet.
- e. Can not provide a valid purchasing prove.
- f. Not belong to SMSL product.

### (4) How to warranty

This term is only suitable for china mainland, other region please refer to the policy of the local sales agents and national regulations.

S.M.S.L<sup>®</sup>



FC CE

<http://smsl-audio.com>

S.M.S.L<sup>®</sup>

M9

Manual